

ABOUT FOOTPRINTS

Footprints Community is a well-regarded not-for-profit provider of community-based services, working in the community for over 30 years. We specialise in working with older people, those that experience disability, mental illness, as well as those who are at risk of homelessness.

Footprints adopts a non-discriminatory practice and working alongside people with respect and dignity, to enhance their capacity to live independently in the community, is integral to our service.

Our professionally qualified and highly skilled workforce operate within a client-centred practice framework ensuring principles of strengths-based practice are implemented into service delivery.

We believe in independence, strength and choice. We work with people and their representatives, at their own pace, to empower and support people to reach their goals.

Footprints is a member of the healthy@home consortium, and proud winner and finalist of multiple Aged Care awards.



HOW TO ACCESS THIS SERVICE

To access the ACH program you can:

- be referred to the ACH program by contacting My Aged Care on 1800 200 422
- contact Footprints on 07 3252 3488 and ask to talk to a staff member from the ACH team or email: ACH@footprintscommunity.org.au.



ACH is a free service, supported by funding from the Australian Government.



Contact us:

P: 07 3252 3488

F: 07 3252 3688

ACH@footprintscommunity.org.au

P.O. Box 735 New Farm QLD 4005

www.footprintscommunity.org.au

STAY CONNECTED WITH US



NOVEMBER 2021

ASSISTANCE WITH CARE AND HOUSING





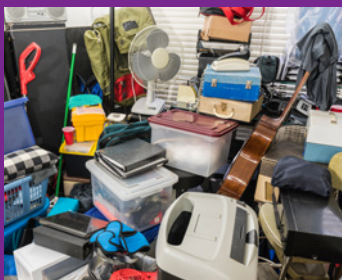
EXPERIENCING HOUSING STRESS?
Contact our friendly ACH team today and find out how we can support you.



ABOUT THE ACH PROGRAM

The Assistance with Care and Housing (ACH) program is designed to support people who are homeless or at risk of homelessness, to access appropriate and sustainable housing as well as community care and other support services, specifically targeted at avoiding homelessness or reducing the impact of homelessness.

ACH also provides support to people experiencing symptoms of hoarding disorder or hoarding related behaviours.



ACH OFFERS:

-  Assistance with paperwork
-  Assistance with arrangements to relocate
-  Case management
-  Connection to services and community supports
-  Declutter service and support
-  Help to understand your tenancy/rights
-  Information and advocacy
-  Locating appropriate properties
-  Providing transport to view properties

WHO IS ELIGIBLE

You may be eligible for the ACH program if you are:

- aged 50 years and over (or 45 years and over for Aboriginal and Torres Strait Islander people)
- on a low income
- are homeless or at risk of homelessness as a result of experiencing housing stress or not having secure accommodation
- eligible for registration with My Aged Care
- live in one of the following regions:
 - Wide Bay
 - Sunshine Coast
 - Caboolture
 - West Moreton
 - Brisbane North and South
 - Logan River Valley
 - Gold Coast.

